

1/0 AWG Non-Insulated Flag Ring

Material: Tin Plated Copper with Brazed Seam

Insulation Material: None

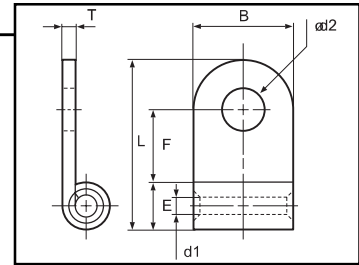
Maximum Electrical Current: 230 Amps

Maximum Temperature Rating: 176°C

Material Thickness (T): .071 **J Type:** .079

Barrel ID (d1): .449 **J Type:** .370

Barrel OD (E): .610 **J Type:** .524



| HOFFMAN PART NO. | STUD SIZE | DIMENSIONS (INCHES) | | | | UL | *PNEUMATIC TOOL |
|------------------|-----------|---------------------|--------------|----------------|--------|----|-----------------|
| | | STUD DIAMETER | TONGUE WIDTH | STUD CLEARANCE | LENGTH | | |
| | | d2 | W | F | L | | |
| FG1/06 | 1/4 | 0.252 | 0.878 | 0.681 | 1.732 | Y | YA5 |
| FG1/06/J | 1/4 | 0.252 | 0.866 | 0.693 | 1.732 | Y | |
| FG1/08 | 5/16 | 0.331 | 0.878 | 0.681 | 1.732 | Y | |
| FG1/08/J | 5/16 | 0.331 | 0.866 | 0.693 | 1.732 | Y | |
| FG1/09 | 3/8 | 0.413 | 0.878 | 0.681 | 1.732 | Y | |
| FG1/09/J | 3/8 | 0.413 | 0.866 | 0.693 | 1.732 | Y | |
| FG1/013 | 1/2 | 0.512 | 0.878 | 0.681 | 1.732 | Y | |
| FG1/013/J | 1/2 | 0.512 | 0.866 | 0.693 | 1.732 | Y | |

2/0 AWG Non-Insulated Flag Ring

Material: Tin Plated Copper with Brazed Seam

Insulation Material: None

Maximum Electrical Current: 265 Amps

Maximum Temperature Rating: 176°C

Material Thickness (T): .079

Barrel ID (d1): .524 **J Type:** .524

Barrel OD (E): .689 **J Type:** .689

| HOFFMAN PART NO. | STUD SIZE | DIMENSIONS (INCHES) | | | | UL | *PNEUMATIC TOOL |
|------------------|-----------|---------------------|--------------|----------------|--------|----|-----------------|
| | | STUD DIAMETER | TONGUE WIDTH | STUD CLEARANCE | LENGTH | | |
| | | d2 | W | F | L | | |
| FG2/08 | 5/16 | 0.331 | 0.941 | 0.681 | 1.839 | Y | YA5 |
| FG2/08/J | 5/16 | 0.331 | 0.937 | 0.689 | 1.850 | Y | |
| FG2/09 | 3/8 | 0.413 | 0.941 | 0.681 | 1.839 | Y | |
| FG2/09/J | 3/8 | 0.413 | 0.937 | 0.689 | 1.850 | Y | |
| FG2/013 | 1/2 | 0.512 | 0.941 | 0.681 | 1.839 | Y | |
| FG2/013/J | 1/2 | 0.512 | 0.937 | 0.689 | 1.850 | Y | |

*Refer to Tool Selector Chart ([page 92-93](#)) for Tool Die Numbers.

